



LIGHTHOUSE®
Controlled Environments

MAX TENTS

MAX

Apertures

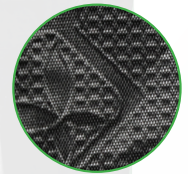
All apertures feature draw strings and are double lined for light proofing with 360 degree passive air vents with mite-proof netting to offer uniform distribution of air flow

Tivax Zips

Double lined quality zips that are easy to use with no snagging and offering good light proofing



Woven Polyamide (PA) extremely strong – 600 Denier



Black-out lightproof layer



Silver coated metallised UltraLux film – Durable and highly reflective

UNIQUE UltraLux

Manufactured using the highest quality non-toxic and environmentally friendly plasticisers, this 3 layer fabric is extremely strong, 100% light proof and has some of the highest reflective qualities on the market. Tests show that it offers more than 30% extra reflectivity when compared to rival products

High reflectivity means higher growth rates and higher production levels

Wipe clean finish

With the option of both budget and premium versions, Lighthouse portable grow tents and accessories are designed to offer the best indoor self-contained growing environment available, designed by growers for growers, with the benefits and features you'd like but which were never previously combined in such a comprehensive way. With the added benefit of easy assembly, the range is strong, durable and efficient.

Lighthouse MAX is the premium tent, for the grower who wants no compromises. It offers a durable, heavy-duty frame that incorporates metal corners, the thickest strongest poles on the market and multiple choices of ducting and cable glands all with double seals.

The attention to detail in the design of the Lighthouse range extends through both the premium Lighthouse MAX and the budget Lighthouse LITE. Both benefit from a new reflective material called UltraLux, which offers up to 30% higher reflectivity than traditional products, while the Tivax zips fitted to all doors have proven ability to offer a quality seal when closed.

A range of Lighthouse accessories is also available from plant support netting through to accessory pouches and harvest dry racks.



LIGHTHOUSE®

Controlled Environments

MAX TENTS

MAX

Additional MAX Features:

- Strong, reliable poles with welded metal corners
- Lighthouse MAX frames are some of the best on the market, benefitting from metal welded corners and 22mm to 25mm diameter steel poles for the ultimate in strength

MAX Apertures

Aperture covers for full light proofing when the larger apertures are not in use. Larger Max models also feature low level air intake fan sock – more controllable airflow which offers the retailer an upselling opportunity for an extra fan.

Guarantee

LITE 12 months

MAX 24 months

LightHouse MAX Core Specification:

- Heavy duty Tri Layer 600 Denier material with the special LightHouse UltraLux reflective liner
- Quality Tivax double lined zips that are easy-to-use with no snagging and offering good light-proofing
- Frame - 22mm or 25mm steel poles with welded metal corners - offering ultimate strength and durability
- All outlets for air and cables are double lined and light tight with pull toggles on each lining
- All larger air out socks benefit from outer attachable Velcro covers to stop light when not in use
- Roof poles with rubber ends for strong grip
- One piece waterproof insert tray
- Velcro handy straps for securing cables and wires
- Door clips on all doors for fastening when open
- Supplied in a strong fabric carry bag

MAX 0.5m

Size: 0.5m x 1m x 1.8m

Pole size: 22mm

Air out is through the roof with a 200mm (8") ducting gland

2 x inline 200mm (8") socks for use with air-cooled lighting

2 x 100mm (4") cable glands

3 x passive air fine (anti-mite) mesh vents at base with light-proof covers when not in use

4 x Filter straps

Recommendations:

Ideal for up to 2 plants full cycle or a stock plant for cloning

For single lamp set up - either a 250w HID or high wattage CFL

Exhaust fan around 180m³



MAX 0.76m

Size: 0.76m x 0.76m x 1.8m

Pole size: 22mm

Air out is through the roof with a 200mm (8") ducting gland

2 x inline 200mm (8") socks for use with air-cooled lighting

2 x 100mm (4") cable glands

3 x passive air fine (anti-mite) mesh vents at base with light-proof covers when not in use

4 x Filter straps

Recommendations:

Ideal for 1 large plant, the full cycle of 3-4 smaller plants or a large stock plant unit

For single lamp set up - either a 400w HID or high wattage CFL

Exhaust fan around 220m³





LIGHTHOUSE®
Controlled Environments

MAX TENTS

MAX

MAX 1m

Size: 1m x 1m x 2m

Pole size: 22mm

2 options on air out, through the roof or side

1 x base side air in with a 250mm (10") ducting gland

2 x inline 250mm (10") socks for use with air-cooled lighting

2 x 100mm (4") cable glands

3 x passive air fine (anti-mite) mesh vents at base with light-proof covers when not in use

2 x side doors for easy access to crop

4 x Filter straps

Recommendations:

Ideal for 1 large plant, 4 smaller plants or for use as a drying/storage environment, when used with the LightHouse DryNet

For single lamp set up - 400w HID

Exhaust fan around 350m³



MAX 1.2m

Size: 1.2m x 1.2m x 2m

Pole size: 25mm

2 options on air out, through the roof or side

1 x base side air in with a 300mm (12") ducting gland

2 x inline 300mm (12") socks for use with air-cooled lighting

2 x 100mm (4") cable glands

3 x passive air fine (anti-mite) mesh vents at base with light-proof covers when not in use

2 x side doors for easy access to crop

4 x Filter straps

Recommendations:

Ideal for 4 mid-size plants, fits most growing systems and is ideal for the PLANT!T® aeros IV

For single lamp set up - 600w HID

Exhaust fan around 440m³



MAX 2.4m

Size: 1.2m x 2.4m x 2m

Pole size: 25mm

2 options on air out, through the roof or side

1 x base side air in with a 300mm (12") ducting gland

2 x inline 300mm (12") socks for use with air-cooled lighting

3 x 100mm (4") cable glands

4 x passive air fine (anti-mite) mesh vents at base with light-proof covers when not in use

2 x side doors, plus large rear door for easy access to crop

4 x Filter straps

Recommendations:

Ideal for 2 large plants or 8 mid-size plants

Two lamp set up - 2 x 600w HID

Exhaust fan around 700m³

NOTE: This tent will hold a fan inside the 300mm socks.

On this model, access from the front can either be by using the two inner curved doors or if full access is required, just zip the entire front off!





LIGHTHOUSE®
Controlled Environments

MAX TENTS

MAX

MAX 2M²

Size: 2m x 2m x 2m

Pole size: 25mm

4 options on air out, through the roof or side

2 x one piece waterproof insert tray

1 x base side air in with a 300mm (12") ducting gland

4 x inline 300mm (12") socks for use with air-cooled lighting

4 x 100mm (4") cable glands

6 x passive air fine (anti-mite) mesh vents at base with light-proof covers when not in use

2 x side doors, plus large rear door for easy access to crop

8 x Filter straps

Recommendations:

Ideal for 5 large plants or 16 mid-size plants

For four lamp set up - 4 x 400w HID

Exhaust fan around 1100m³

NOTE: This tent will hold a fan inside the 300mm socks.

On this model, access from the front can either be by using the two inner curved doors or if full access is required, just zip the entire front off!



MAX 2.4M²

Size: 2.4m x 2.4m x 2m

Pole size: 25mm

4 options on air out, through the roof or side

2 x one piece waterproof insert tray

1 x base side air in with a 300mm (12") ducting gland

4 x inline 300mm (12") socks for use with air-cooled lighting

4 x 100mm (4") cable glands

6 x passive air fine (anti-mite) mesh vents at base with light-proof covers when not in use

2 x side doors, plus large rear door for easy access to crop

8 x Filter straps

Recommendations:

Ideal for 5 large plants or 16 mid-size plants

For four lamp set up - 4 x 600w HID or 4 x 1000W HID

Exhaust fan around 1400m³

NOTE: This tent will hold a fan inside the 300mm socks.

On this model, access from the front can either be by using the two inner curved doors or if full access is required, just zip the entire front off!

