

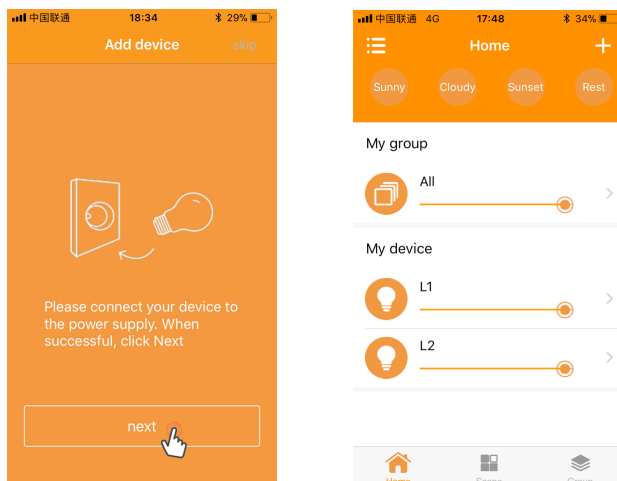


Phytolite Linfa Line

Operation Manual

Wireless LED Horticultural Lighting

1. Scan the QR code on the LED lamp to download and install the APP on your mobile, and trust this APP on your mobile (on iPhone: Settings – General – Device Management).
2. Turn on Bluetooth on mobile, and open the APP – Click the “Next” to search and add devices (3 seconds flicker while searching and adding devices).

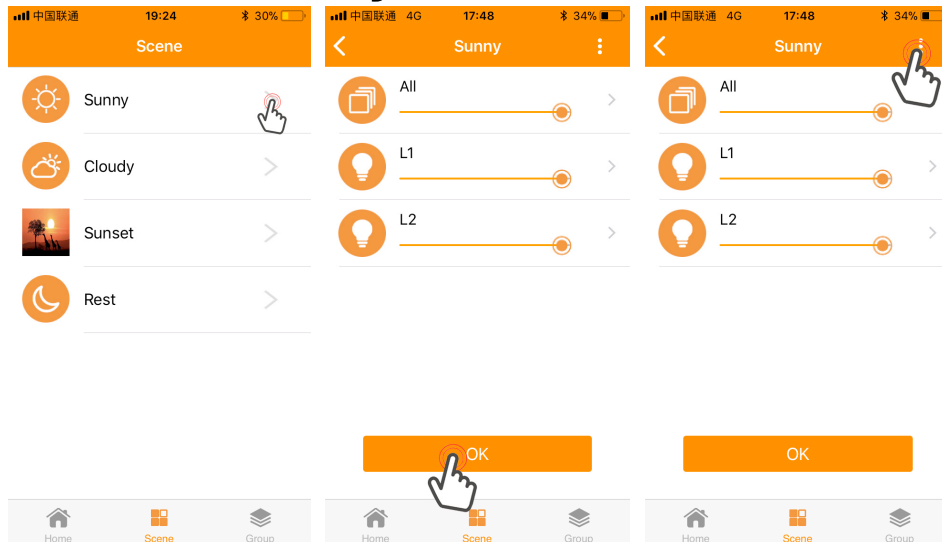


Scenario Simulation Timing

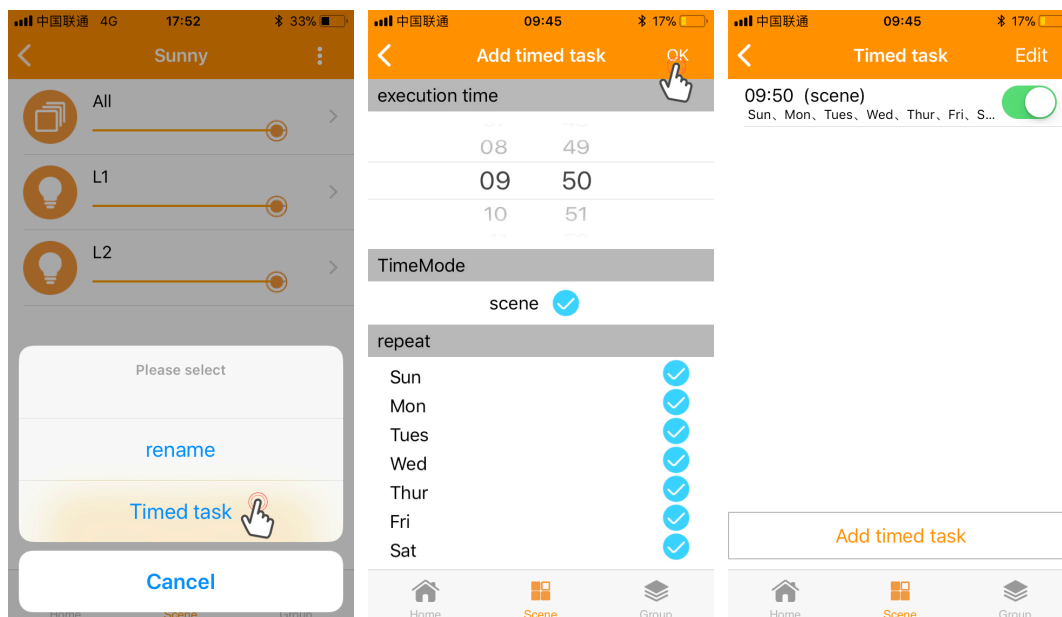
Choose “**Scene**” for the simulation of Weather and Sunset & Rest mode (scene name and icon are both customizable by users), follow the Example steps as below.

1. Enter the **Sunny Scene** and set the lighting brightness at 100%, and remember to click the “OK” to ensure the brightness setting is stored (3 seconds flicker while the storage). Access more options (Rename, Time Task) by clicking the top right corner of the APP.

Phytolite Linfa Line



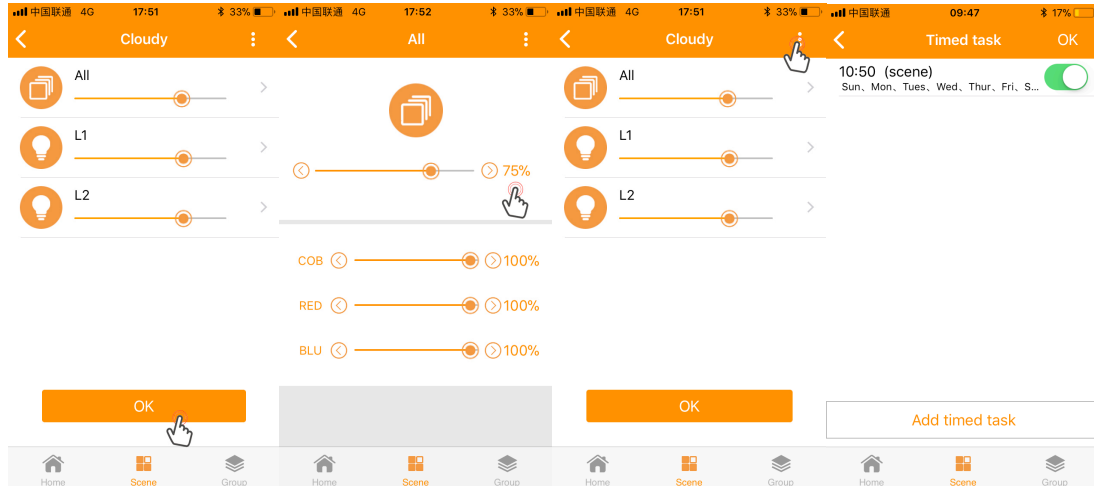
2. Set the **Start Time** of Sunny at 09:50 and click OK to save the settings.



3. Go back to the Scene home page to enter the **Cloudy Scene**, and set the lighting brightness at 75% starts at 10:50 (remember to click the “OK” to ensure the brightness setting is stored, 3 seconds flicker while the storage).

4.

Phytolite Linfa Line



4. Set the **Sunset scene** and **Rest scene** respectively at the brightness of 30% and 0% following the same steps above.

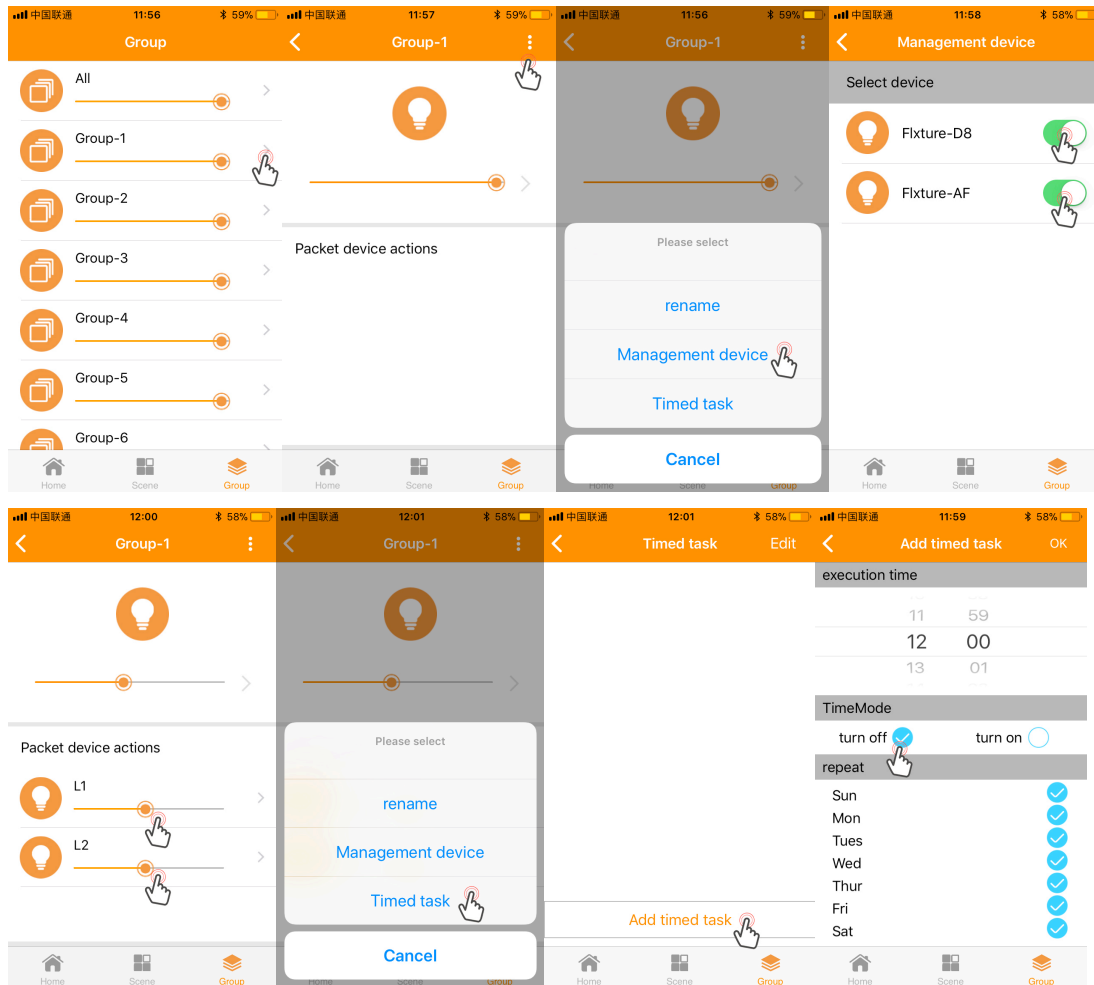
A complete scenario simulation has done.
Sunny Mode: 09:50 – 10:50 (brightness 100%)
Cloudy Mode: 10:50 – 17:50 (brightness 75%)
Sunset Mode: 17:50 – 20:00 (brightness 30%)
Rest Mode: 20:00 – 09:50 (brightness 0%)

Grouping Timing

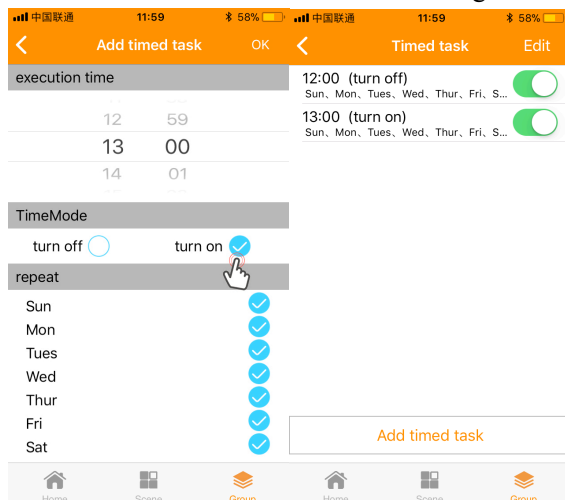
Choose “**Group**” for timing the lighting fixture at a given brightness, follow the Example steps as below.

1. Enter the “Group 1” – Management device – Select devices.
2. Return to the parent menu – Set brightness (at 50%) – Timed task – Add time task (Turn off at 12:00).

Phytolite Linfa Line



3. Set the Turn On time at 13:00 following the steps above.



A complete Grouping Timing has done.
All lighting devices start working at brightness of 50% from current time to 12:00.
All lighting devices turn off from 12:00 to 13:00.
All lighting devices start working again at brightness of 50% from 13:00 to 12:00 (next day).